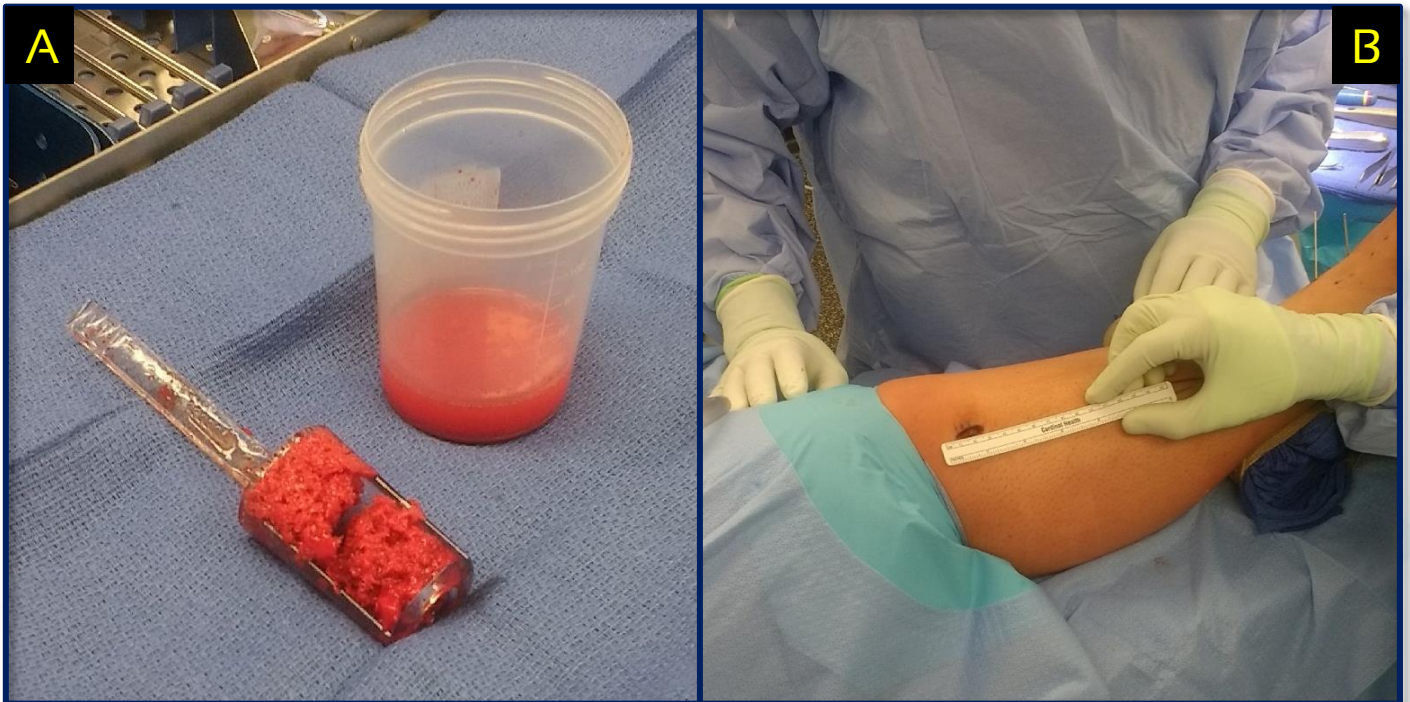


## Avitus® Bone Harvester PROXIMAL TIBIA HARVEST

- 2 cm incision
- 6 minutes harvest time
- 30 CC's of gold-standard cancellous bone
- 20 CC's of gold-standard bone marrow captured
- Graft was successfully used for a Tibio-talar + Calcaneal Fusion



- A) Shows Avitus® gold standard cancellous bone and marrow separated with the Avitus® Filter Insert
- B) Shows incision site of harvest