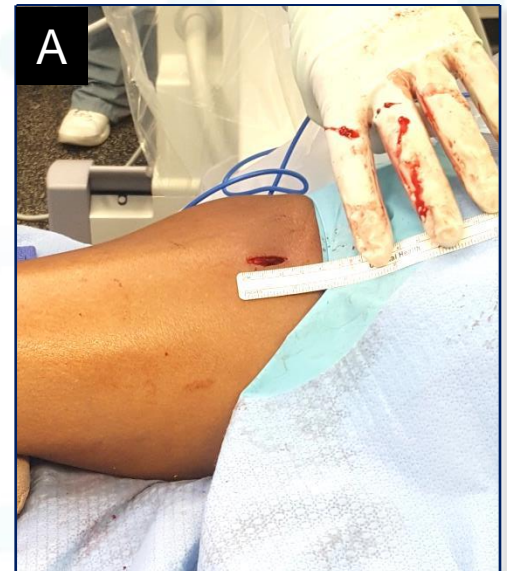


## Avitus<sup>®</sup> Bone Harvester PROXIMAL TIBIA HARVEST

- 5 minutes harvest time
- 30 CC's of gold-standard cancellous bone
- 30 CC's of gold-standard bone marrow captured
- Graft was used for a tibio-talar-calcaneal (TTC) fusion



- A – Minimally invasive harvest site entry  
B – Radiograph of Avitus<sup>®</sup> Bone Harvester within harvest site  
C – Avitus<sup>®</sup> graft and marrow separated post-harvest