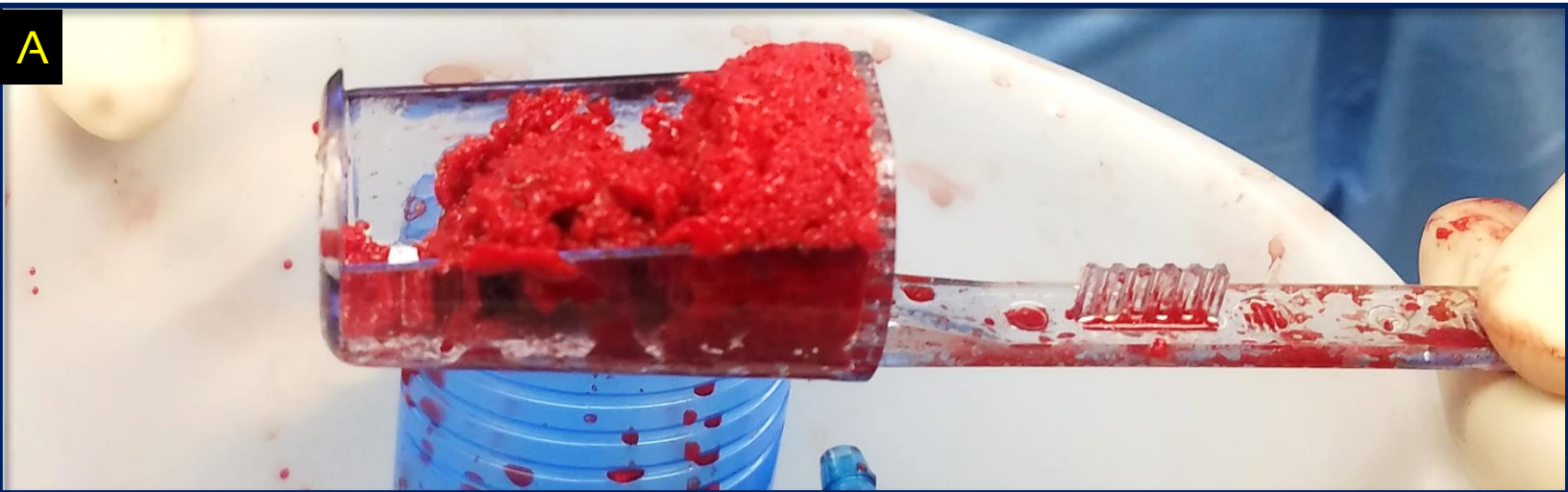


CASE STUDY

Avitus[®] Bone Harvester PROXIMAL TIBIA HARVEST

- 6 minutes harvest time
- 1.5cm incision
- 20 CC's of cancellous bone
- 10 CC's of bone marrow captured
- Graft was successfully used for a Subtalar Fusion
- Saved hospital \$6,025



A) Avitus[®] gold standard cancellous bone retrieved from the Avitus[®] Bone Harvester in the Avitus[®] Filter Insert

B) 1.5cm incision over proximal tibia

sales@avitusortho.com



Minimum Access. Maximum Benefit.™