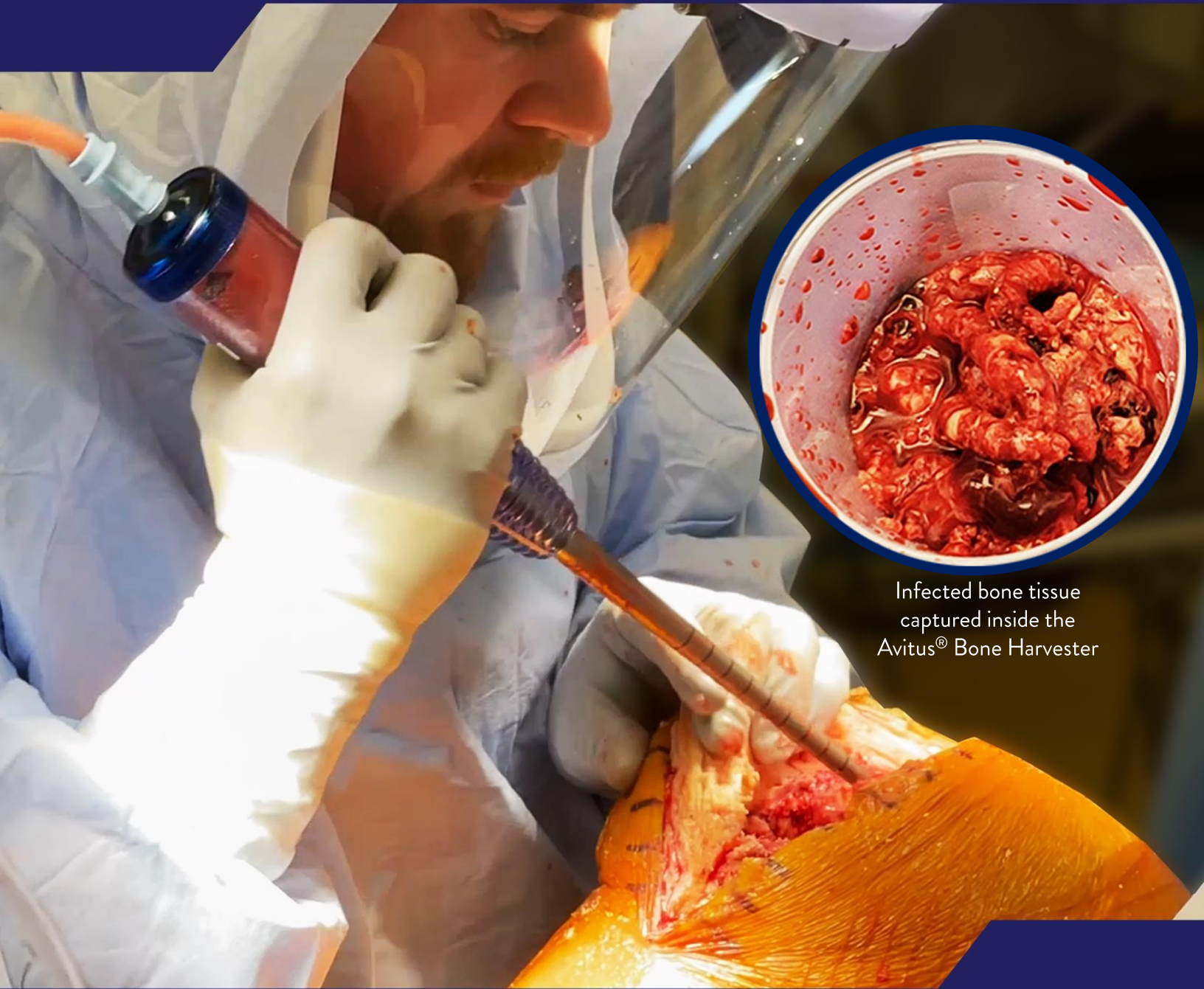


# AVITUS<sup>®</sup> BONE HARVESTER

## TOTAL JOINT DEBRIDEMENT



Infected bone tissue  
captured inside the  
Avitus<sup>®</sup> Bone Harvester

### **VERSATILE & RAPID BONE DEBRIDEMENT FOR:**

- ✓ Single stage total joint revisions
- ✓ Infection / explant / antibiotic spacer (static & articulating)
- ✓ Revision of intramedullary fixated prosthesis
- ✓ Any need to evacuate Femoral/Tibial/Humeral canals
- ✓ Need for deep endosteal and intramedullary specimen
- ✓ Grafting of large cystic defects

|  | <b>AVITUS®<br/>Debridement<br/>Advantages</b>  | <b>Conventional<br/>Debridement<br/>Challenges</b>  |
|--|--|---|
| <b>SAVE TIME</b>                               | Enables a 2-3 minute debridement at the end of a complex surgery with streamlined suction bone harvesting technology                         | 20-25 minutes using back cutting curettes, osteotomes, pituitaries, Christmas tree pulse lavage |
| <b>REDUCE<br/>CONTAMINATION<br/>RISK</b>       | The Avitus® closed capture system contains the tissue, potentially reducing contamination of surrounding tissues and reseeding of infection. | Messy aggressive debridement and very hard to keep surrounding environment clean                |
| <b>GAIN CONFIDENCE</b>                         | Surgeon sees what they're debriding as they're debriding   | Lack of feedback of the tissue being debrided   |
| <b>HIGH QUALITY<br/>SPECIMEN<br/>RETRIEVAL</b> | Deep IM specimen for culture   | Superficial specimens, difficult to get quality intramedullary and deep specimens for culture   |
| <b>MINIMIZE<br/>INSTRUMENT<br/>PASSES</b>      | Streamlined scrape and capture technology enables debridement through a single pass  | Dozens of instrument passes per debridement   |



## **AVITUS® BONE HARVESTER** ADVANCED SUCTION CURETTAGE

| Product Code | Size | Application                             |
|--------------|------|---|
| BH-110       | 8mm  | Large patient anatomy, defects & canals |
| BH-220       | 6mm  | Small patient anatomy, defects & canals |

**Learn more at [www.avitusortho.com](http://www.avitusortho.com) | [sales@avitusortho.com](mailto:sales@avitusortho.com)**

Refer to the device specific instructions for use for information on indications for use, contraindications, potential complications, warnings, and precautions. APM017.A 2022-02 (DCO-0357)